

CERTIFICATE OF LOCATION OF GOVERNMENT CORNER

SOUTHWEST Corner of Section 16, Township 106, Range 43, 5th P.M.

STATE OF MINNESOTA, County of MURRAY

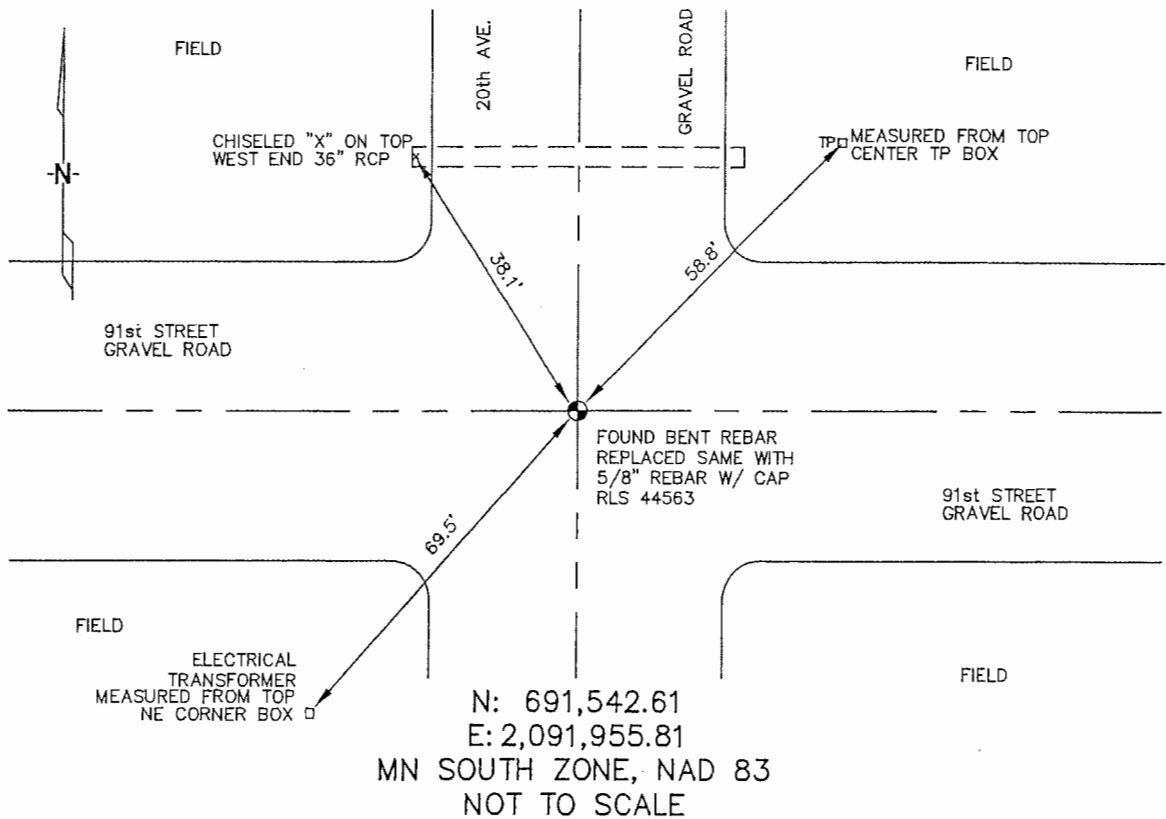
At the corner location shown on the sketch :

On 3/22/2006 found BENT REBAR @ INTERSECTION OF ROADS.

left monument as found, lowered monument, removed monument (explain)

On 3/22/2006 set 5/8" REBAR WITH CAP: RLS 44563.

Sketch of reference ties



Statement of evidence relative to this corner location is on back page

I hereby certify that this document and the data contained herein was prepared by me or under my direct supervision.

Thomas V. Jeff
Signature Date 4/24/06

Registration No. 44563

- Land Surveyor, Professional Engineer
- County Surveyor, County Engineer

OFFICE OF THE COUNTY RECORDER

County of _____

SEP 28 2006

I hereby certify that this document was filed in the Co. Recorders office at _____ .M. on the day of _____ A.D. , 20

County Recorder James V. Johnson
By _____, Deputy

DOCUMENT NO. _____

STATEMENT OF EVIDENCE:

SOUTHWEST CORNER, SECTION 16, T. 106 N., R. 43 W.,
MURRAY COUNTY, MINNESOTA

- 1866 J.W. Bishop, U.S. Deputy Surveyor, monumented corner.
- 8/2/1927 Murray Co., Found stone in grade,
Ties: NW-45.5' to fence corner;
NE-35.0' to fence corner;
SE-103.2' to highline pole;
S-29.0' to line of poles.
- 3/22/2006 Ulteig Engineers, Inc., Survey Crew, Brian Payne Party Chief;
found bent rebar at intersection of gravel roads; replaced same
with 5/8" rebar with cap: RLS 44563.
Ties: NW-38.1' to chiseled "X" on top, west end, of 36" RCP.;
NE-58.8' to top, center of telephone pedestal;
SW-69.5' to top, NE corner of electrical transformer box;